

GAYLER & POPE LTD.

112-117 High St. Marylebone London W.1

(3 minutes from Harley Street or Bond Street Tube Station)

WE SPECIALISE IN NURSES' UNIFORMS AT MODERATE PRICES.

Stock sizes:
NURSE CLOTH 9/11, 10/11, 11/9
POPLIN 14/11, 19/11
ALPACA, Unlined, 18/11
 Lined through-out, 27/9.
 Fadeless Duro, 21/9 and 16/11.
 Made to measure 1/- extra.



from 9/11

THE NEW BRIGHTON
(See above)



from 9/11

THE RODNEY (See above)



STATE REGISTERED COAT.

Regulation Serge or Gabardine, 4 Guineas. Permit required.

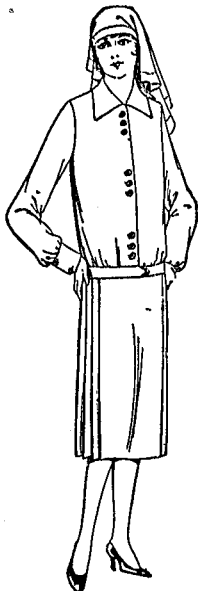
We also stock The "Clifton" and The "Regent" in Navy Gabardine, lined, at 42/-.
 Sizes 42, 44 and 46. Splendid value.

STORM CAP, 6/11.

No permit required for these.

UNIFORM HATS.

In Straw, Felt or Velour.
 Sizes: 6½, 6¾, 7, 7½.
 Fine Canton, 8/11, 12/11
 Fine Felt ... 7/11
 Velour ... 12/11
 Navy, Brown & Grey.



THE NEW BUCKLAND DRESS.

Nurse Cloth, 10/11, 12/11
 Wh, Drill or Pique, 11/9
 Poplin, Navy and all Colours ... 14/11
 Alpaca ... 18/6
 Made to measure, 1/- extra. Patterns free

THE "AVIS."
 Nurses' Overall Dress, with detachable buttons, inverted pleats at sides. The new inset pockets. Pique and Drill, 12/11; Poplin, 15/11 & 18/11; Tricoline, 25/6.

GAYLER & POPE, Ltd., High St., Marylebone London, W.1



BY APPOINTMENT

THESE ESSENCES PROVIDE RAPID STIMULATION AND RESTORE VITALITY WHEN SOLID DIET IS OUT OF THE QUESTION

A recent investigation showed that out of every 100 doctors interviewed 99 are recommending Brand's Essences for their patients.

These Essences can be swallowed without effort and rapidly absorbed by the digestive organs, for they consist only of the pure essences of the finest meat conserved in natural jelly form. No substances are added — such as colouring matter, gelatine or preservatives, which could hinder assimilation.

Containing those properties of meat which excite the gastric secretions, Brand's Essences stimulate the digestive organs to instant activity. When illness leaves the patient in an exhausted condition they restore vitality rapidly, and in convalescence they help to overcome the patient's intolerance of solid food by rousing the appetite.

Brand's Essences can be obtained at chemists and stores throughout the world in tins and glasses. On receipt of a professional card, samples will be sent you immediately. Write Dept. K1, Brand & Co. Ltd., Mayfair Works, Vauxhall, s.w.8.

OUT OF EVERY 100 DOCTORS

RECENTLY

INTERVIEWED

99 RECOMMEND

BRAND'S ESSENCES

(Made only from the finest English Beef, Chicken and Mutton.)

[previous page](#)

[next page](#)